



ALAMEDA
HEALTH SYSTEM

Overview for Alameda County Homeless Commission

Mission, Vision and Values

Our Mission

Caring, Healing, Teaching, Serving All

Our Vision

Alameda Health System will be recognized as a world-class patient and family centered system of care that promotes wellness, eliminates disparities and optimizes the health of our diverse communities.

Our Values

Commitment, Teamwork, Excellence, Respect, Integrity, Compassion.



Facilities

Hospitals:

- Fairmont (140 beds),
- Highland (236 beds)
- San Leandro (93 beds)
- Alameda (281 beds)
- John George Psychiatric Hospital (80 beds)

Ambulatory Care Clinics:

- Highland,
- Eastmont
- Hayward
- Newark
- HCH Mobile Health

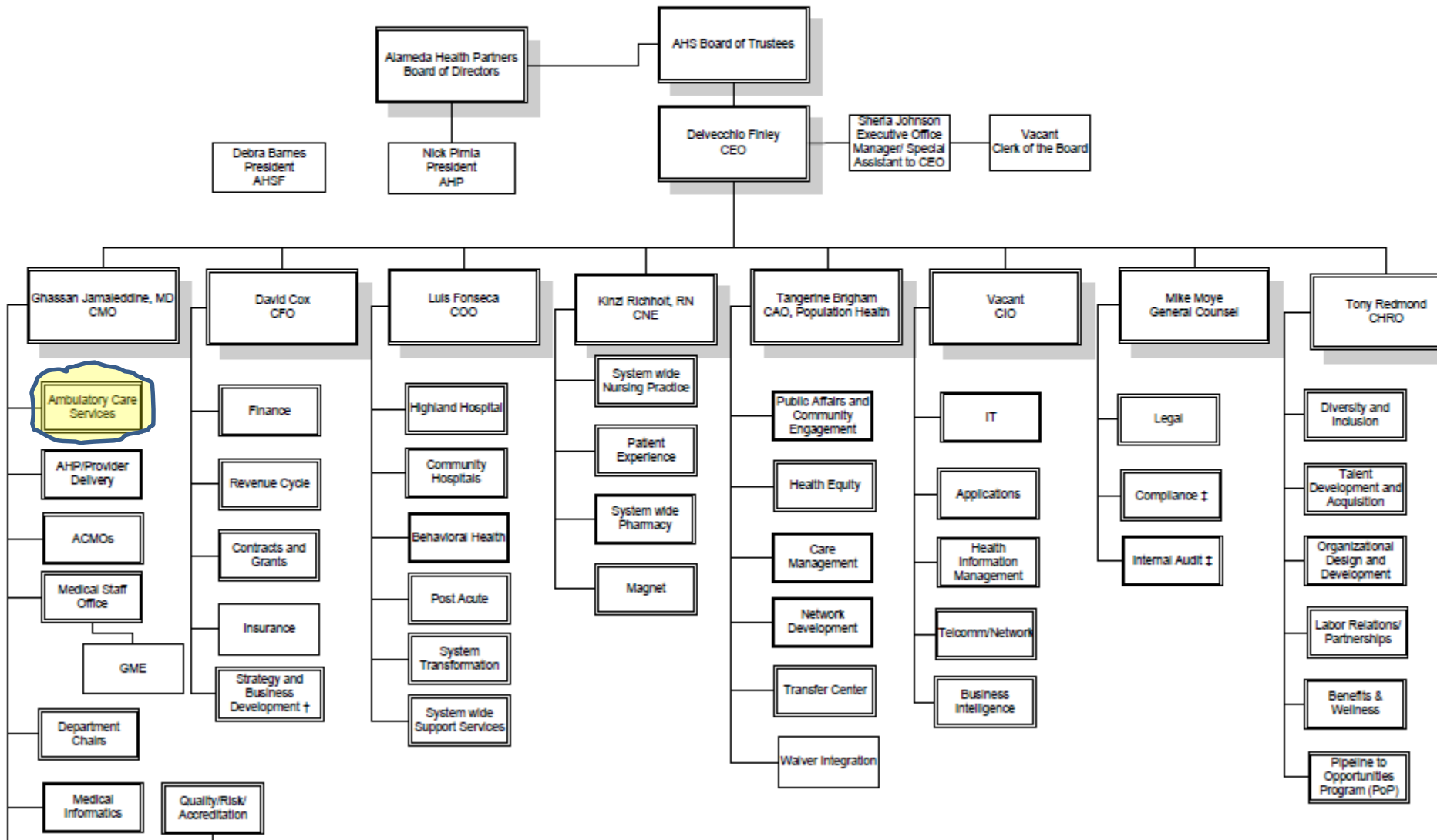
Governance and Leadership

Board of Trustees
Michelle Lawrence, President



Executive Team
Delvecchio Finley, CEO

ALAMEDA HEALTH SYSTEM ORGANIZATIONAL CHART



Ambulatory Care Services



Dr. Palav Babaria, Chief Administrative Officer



Kathryn Horner, Vice President of Ambulatory Care Services

- Primary Care
- Substance Use
- Behavioral Health
- Enabling Services
- Cancer Care and Infusion Therapy
- Cardiovascular Care
- Dental Care, Oral and Maxillofacial Surgery
- Dermatology
- Endocrinology
- Eye Care
- Gastroenterology
- HIV Medical Care
- Kidney Care
- Maternal Child Health
- Neurology
- Nutrition and Weight Management Counseling
- Orthopedics
- Pediatrics
- Podiatry
- Psychiatric Care
- Refugee Health Services
- Rheumatology
- Same Day Clinic
- Senior Health
- Urology
- Wound Care

Patients Experiencing Homelessness

All patients are screened at registration and living arrangement is documented in our Soarian Financial System which feeds back our annual data on the number of patients served at AHS who are experiencing homelessness.



Quality Improvement Efforts for Patients Experiencing Homelessness

- Clinical and quantitative reviews of data at monthly Ambulatory Quality Steering Committee Meetings and Quarterly at Alameda County Healthcare for the Homeless Quality Committee Meetings

ACHCH Homeless Health Center Scope and AHS Services



In HCH Scope Homeless Care at:	Out of Scope
5 Ambulatory Clinics	In-Patient Care (Hospital)
Primary Care services	Emergency Departments
Same Day Clinic	John George Psychiatric Hospital
Specialty Care (soon)	Laboratory
Dental (soon)	Imaging
Mobile Health	Surgery
Special Teams	Respite Care

Service Expansion Teams @ Eastmont (HAT team) and Highland (SASE)

- Serving patients experiencing homelessness with substance use disorders -- Medication Assisted Treatment Substance use screening/support, enabling services.

AHS Health Advocates

- Housing specialists supporting enrollment for housing and providing advocacy/benefits Highland Wellness and Eastmont



2016 Annual Data for Patients Experiencing Homelessness

- 16,415 visits in 2016
- 3,880 Unduplicated patients
- 50+ FTE total combined AHS system wide FTE of MDs, clinicians, support staff providing homeless health center care.
- \$7.7M total cost to AHS of homeless health center care.
- \$2.8M homeless revenue (medi-cal) 2016

Day	Time	Frequency	Location
Monday	9:00AM-4:30PM	1st and 3rd Monday of Each Month	City Team Oakland 722 Washington Street Oakland, CA 94612
	9:00AM-12:00PM	2nd and 4th Monday of Each Month	City Team Oakland 722 Washington Street Oakland CA 94612
	1:30PM-4:00PM	2nd and 4th Monday of Each Month	Downtown Oakland Corner of 6th and Castro Oakland, CA 94612
Tuesday	9:00AM-4:30PM	1st and 3rd Tuesday of Each Month	Home Depot Oakland (starting in Dec) 4000 Alameda Ave Oakland, CA 94601
	9:00AM-4:30PM	2nd and 4th Tuesday of Each Month	EOCP Crossroads Shelter 7515 International Blvd Oakland, CA 94621
Wednesday	12:30-4:30PM	2nd Wednesday of Each Month	Cronin House 2595 Depot Road Hayward, CA 94545
	9:00AM-12:30PM	4th Wednesday of Each Month	Building Futures for Women and Children 1395 Bancroft Ave. San Leandro, CA 94577
	1:30PM-4:30PM	4th Wednesday of Each Month	Men on the Way 20424 Haviland Ave Hayward, CA 94541



Thursday	9:00AM-12:30PM	1st and 3rd Thursday of Each Month	Multi Cultural Institute 1920 7th Street, Berkeley 94710 (Mobile parks at 4th Street near RR tracks)
	9:00AM-4:30PM	2nd Thursday of Each Month	New Hope 22110 Montgomery St Hayward, CA 94541
	9:00AM-4:30PM	4th Thursday of Each Month	Home Depot Union City 30055 Industrial Pkwy SW Union City, CA 94587
Friday	9:00AM-4:30PM	1st, 2nd, & 4th Friday of Each Month	St. Vincent De Paul 2272 San Pablo Ave Oakland, CA 94608
	9:00AM-4:30PM	3rd Friday of Each Month	St. Mary's Center 925 Brockhurst St Oakland, CA 94608



Partnership

How does the Homeless Commission engage in work with the AHS Board of Trustees?