

## Alameda County Health Care for the Homeless Commission

Alameda County Health Care for the Homeless Commission  
 Friday, September 30 2016, 2:00pm  
 Location: 1000 San Leandro Blvd #125, San Leandro, CA 94577\*

### AGENDA

Item	Presenter	TAB	Time
<b>A. CALL TO ORDER</b> 1. Welcome 2. Swearing In 3. Introductions 4. Adopt agenda	Rebecca Grubert (HCSA) Kathleen Clason (HCH) Joe DeVries (AFS)		2:00 PM    2:25 PM
<b>B. CLOSED SESSION</b> 1. No closed session this meeting			
<b>C. PUBLIC COMMENT**</b> Persons wishing to address items on or off agenda			
<b>D. CONSENT AGENDA</b> No consent items for this meeting			
<b>E. BOARD ORIENTATION</b> 1. HCH Health Center 101	David Midenbach, HOI		2:30 PM
<b>F. REGULAR AGENDA</b> 1. Consumer Input - no item this meeting 2. Board Ad Hoc Committee reports - no reports this meeting 3. HCH Program report (e.g., Program Director, QI, contracts, finance, etc.) - No reports this meeting 4. Review ordinance creating Commission ( <a href="#">Tab 1</a> ) 5. Proposed Bylaws <b>Action Item: Approve Bylaws (<a href="#">Tab 2</a>)</b> 6. Proposed Co-Applicant Agreement <b>Action Item: Approve Co-Applicant Agreement (<a href="#">Tab 3</a>)</b>		<a href="#">TAB 1</a>  <a href="#">TAB 2</a>  <a href="#">TAB 3</a>	3:00 PM  3:15 PM
<b>G. OTHER ITEMS</b> 1. Small group exercise 2. Future meetings <b>Action Item: Set meeting dates and location</b> 2. Items for upcoming agenda 3. Housekeeping			3:30 PM
<b>H. ADJOURNMENT</b>	Kathleen Clason		4:00 PM

## Alameda County Health Care for the Homeless



**Health Care for the Homeless Commission Meeting  
 September 30, 2016**

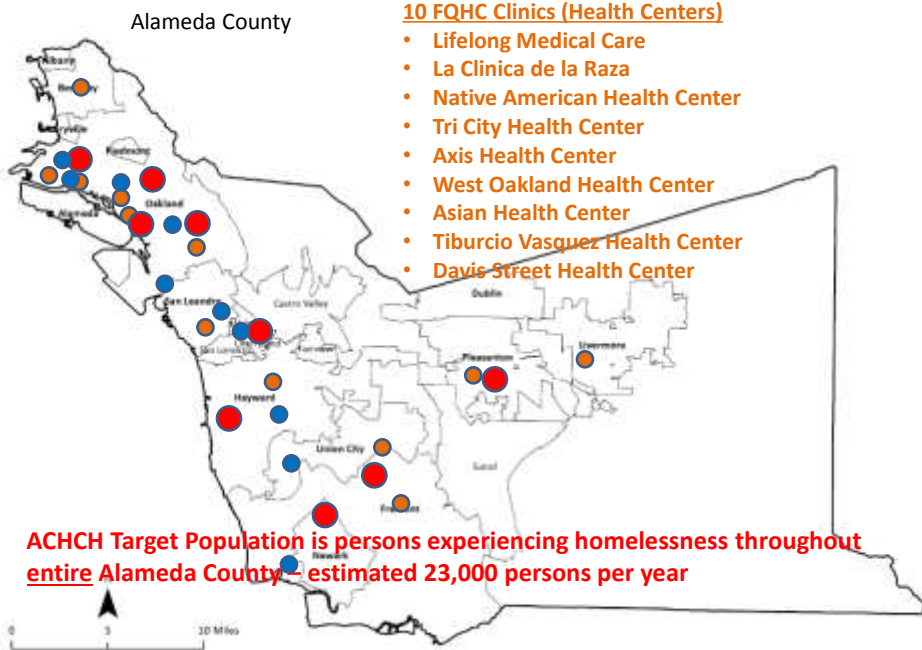
Bureau of Primary Health Care/Health Resources Services Administration  
**Health Center Program**



- Dates back to 1960's
- 1,375 Health Centers
- 25,000,000 patients served
- 225 Health Care for the Homeless (330H) health centers
- 25 Local Health Department-based HCH's
- ACHCHC is unique!

**Health Center Programs:**

- Are located in and serve high need communities
- Provide comprehensive primary care and enabling services
- Provide services to all according to need
- Receive federal grant, FQHC status and other benefits
- Meet HRSA performance and accountability requirements
- Are governed by community board who represent the population served\*



# Alameda County Health Care for the Homeless

## **Mission:**

Improve the health of persons in Alameda County who are experiencing homelessness.

## ***Vision***

*In a socially just society, all persons have access to quality health care and housing. We believe the problems of homelessness and health disparities can be solved.*

ACHCH health center services are provided in 4 major ways:

Primary Care Homes for persons experiencing homelessness	Urgent Care Services	Specialty Dental, Optometry, Behavioral Health, Recovery	Enabling Services
--	----------------------	--	-------------------

# 1. Primary Care Medical Homes for persons experiencing homelessness

ACHCH health center includes six clinics providing primary care medical homes for persons experiencing homelessness:

## Alameda Health System Ambulatory Care Clinics

- Highland Wellness
- Eastmont Wellness
- Hayward Wellness
- Newark Wellness

4900 patients in 2015



## ACHCH/Lifelong TRUST Health Center

386-14<sup>th</sup> Street Oakland

350 persons in 2016



## ROOTS Community Health Center

9925 International Blvd Oakland

50 patients in 2016



# 2. ACHCH Urgent Care Services

<p><b>ACHCH/AHS Mobile Medical Clinics</b></p> <p>2 mobile units; 11 sites throughout County</p>	<p><b>Street Medicine</b></p> <p>ROOTS North County Street Medicine</p> <p>Tri-City/Abode South County Street Medicine</p>	<p><b>AHS Same Day Urgent Care Clinic</b></p>
--	--	---



1,200 persons served in 2015



Est 350 persons served 2016



580 persons served in 2015

### 3. ACHCH Specialty Care Services

#### Restorative Dental Care

- Mobile Dental Unit
- La Clinica Dental

**350 Patients in 2015**



#### Behavioral Health Care Services

- Psychiatry, Psychology, LCSW services
- Community-based contracted Substance Use treatment services **1900 Patients in 2015**
- Buprenorphine and MAT services TRUST/AHS in 2016



### 4. HCH Enabling Services: Case Management, Outreach and Care Coordination

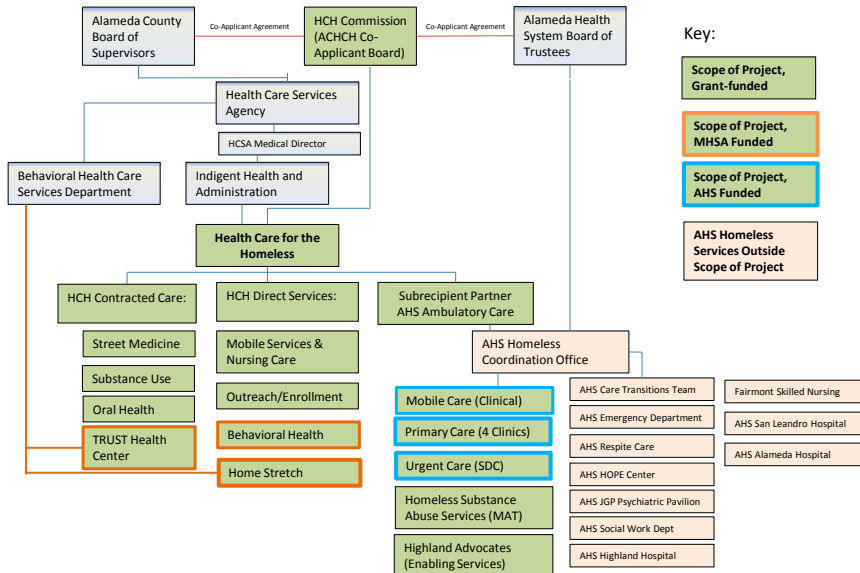
- Case Management
- Outreach, Engagement, Enrollment
- Home Stretch
- Whole Person Care Pilot



# 2015

- 9,301 patients served in 37,000 encounters
- \$14M budget
- \$3.8M HRSA Grant
- 18 FTE Alameda County staff, 11 Contractor FTE, 79 AHS FTE
- 9 CBO contracts for patient care services

Programmatic Chart -- Alameda County Health Care for the Homeless (2017-2019 SAC)



## 19 HRSA Health Center Requirements

1. Periodic Needs Assessment (every 3 years, updated annually)
2. Required Health Center Services (Primary Care, Enabling Services, substance use)
3. Core Staffing Requirements
4. Accessible Hours of Operation/Locations
5. After Hours Coverage
6. Hospital Admitting Privileges/Continuum of Care
7. Sliding Fee Discounts
8. Quality Improvement / Assurance Plan
9. Key Management Staff
10. Oversight of Contracts/Subrecipient
11. Collaborative Relationships
12. Financial Management / Control Policies
13. Billing and Collections
14. Budget
15. Program Data Reporting System
16. Scope of Project

## HRSA Health Center Requirements

### Governance

17. Board Authority
  - Monthly Meetings
  - Approve grant & budget
  - Select/Dismiss Director
  - Select/Approve services/hours
  - Measure & Evaluate program goals
  - Approve operational policies
18. Board Composition
  - At least 9 persons including consumers, representing community served.
  - Consumer Advisory Board
19. Conflict of Interest

ACHCH is a Public Entity health center.

It is governed by a Co-Applicant Board (the HCH Commission) who shares governing authority with

- County of Alameda (BOS) and
- Alameda Health System (BOT)

mediated through the Co-Applicant Agreement

## HCH Commission/HCH Program Calendar 2016-2020

### 2016

- 9/30 First HCH Commission Meeting
- HRSA Approval of HCH Commission Structure
- Monthly HCH Commission Meetings
- October: Approve ACHCH Quality Plan
- Orientation Topics at every meeting

### 2017:

- Review of 2016 UDS report
- Approval of Changes in Scope
- 6/2017 National HCH Conference DC
- Approval of 2018 Budget (BPR)

### 2018

- HCH Program Needs Assessment
- 8/2018 HRSA Operational Site Visit
- Approve 2019 Budget

### 2019

- Approve 2020-2022 Services Area Competition

[www.achch.org](http://www.achch.org)

### Alameda County Health Care for the Homeless Commission

The HCH program is overseen by a community-based governing board, the Alameda County Health Care for the Homeless Commission.

#### Members

Isaac Cheema  
 Betty DeCrest  
 Lynette Lee  
 Gay McDaniel  
 Jean Prasher  
 Father Rigoberto Caloca-Rivas  
 Acha Walker  
 Samuel Weeks, DDE

#### Meetings

The Commission meets monthly. Meetings are open to the public. Please check the board agenda packet for details.

#### September 2016 Meeting

September 30, 2016  
 Health Care Services Agency, 1000 San Leandro Blvd., Suite 325, San Leandro, CA 94577  
 2:00 pm - 4:00 pm

#### Meeting Agenda

#### Resources

[Ordinance](#)  
[Bylaws](#)  
[Co-Applicant Agreement](#)

#### Commissioners Log