

Alameda County Health Care for the Homeless
HEALTH CARE SERVICES AGENCY

ACHCH Commission Meeting
March 16, 2018

ACHCH Health Center UDS Report Overview
CY 2017

Alameda County Health Care for the Homeless
Commission 1

Alameda County Health Care for the Homeless
HEALTH CARE SERVICES AGENCY

CY2017 Uniform Data System Report

- ▶ Annual utilization Report submitted to HRSA every February, covering health center patient demographics, care, outcomes, costs and revenue for previous calendar year.

Alameda County Health Care for the Homeless
Commission 2

Alameda County Health Care for the Homeless
HEALTH CARE SERVICES AGENCY

ACHCH Health Center vs. HCH Program

| ACHCH Health Center | HCH Program |
|--|---|
| Includes all in-scope, reportable services provided to health center patients at sites on ACHCH scope of services. | Grantee of HRSA health center funding, housed within Alameda County HCSA. |
| Includes contractors and their staff, costs, revenue related to health center visits. | Total: 21 FTE |
| Total 112.29 FTE | Administers grant, contracts, governance, monitors health center compliance, and provides some direct health care services. |

Alameda County Health Care for the Homeless Commission 3

Alameda County Health Care for the Homeless
HEALTH CARE SERVICES AGENCY

ACHCH Health Center Patient:

A person who has received at least one ACHCH directly-provided or contracted health care service.

Most ACHCH health center patients are persons experiencing homelessness. Some are formerly homeless (up to 12 months) or in Permanent Supportive Housing (indefinitely).

Alameda County Health Care for the Homeless Commission 4

Alameda County Health Care for the Homeless
HEALTH CARE SERVICES AGENCY

ACHCH Health Center Scope of Services Form A Services

Required Services:
General Primary Medical Care, Lab, radiology, screenings, family planning, immunizations, Well Child services, GYN, prenatal, postpartum care, preventative dental, pharmacy, substance use, Enabling Services

Additional Services
Dental, Mental Health, Optometry, Acupuncture, Additional Enabling,

Specialty Services:
Podiatry, Psychiatry, Ophthalmology, Orthopedics
TBA: Endocrinology, Dermatology, Rheumatology, Urology, Cardiology, Chest, Gastroenterology, Oncology, Neurology, Oral Surgery, ENT

Alameda County Health Care for the Homeless Commission 5

Alameda County Health Care for the Homeless
HEALTH CARE SERVICES AGENCY

ACHCH Health Center Scope of Services Form 5B Sites

- ACHCH/AHS Mobile Services (Van)
- AHS Ambulatory outpatient Clinics (HGH, Same Day Clinic, Eastmont, Newark, Hayward)
- HCH Program 384-14th Street Oakland
- ROOTS Street Medicine
- Tri City Health Center (Street Medicine)
- Lifelong TRUST Health Center 1404 Franklin Oakland
- Onsite Dental Foundation
- La Clinica de la Raza

Alameda County Health Care for the Homeless Commission 6

Alameda County Health Care for the Homeless
HEALTH CARE SERVICES AGENCY

ACHCH Contractors

| Contractor | Service/Site |
|--------------------------------------|---|
| Alameda Health System (Subrecipient) | Primary Care/Specialty Care: Highland, Eastmont, Hayward, Newark, Mobile Health |
| Lifelong Medical | TRUST Health Center |
| Onsite Dental Foundation | Mobile Dental Care |
| ROOTS Community Health Center | N.County Street Medicine (STOMP) |
| Tri City Health Center | S.County Street Medicine |
| East Bay Community Recovery Project | Substance Use Outreach |

Alameda County Health Care for the Homeless Commission 7

Alameda County Health Care for the Homeless
HEALTH CARE SERVICES AGENCY

UDS Total Health Center Utilization CY2017

Total Patients: 7,475

Total Visits: 41,280

Total Medical Patients: 6,241 / 25,947 visits

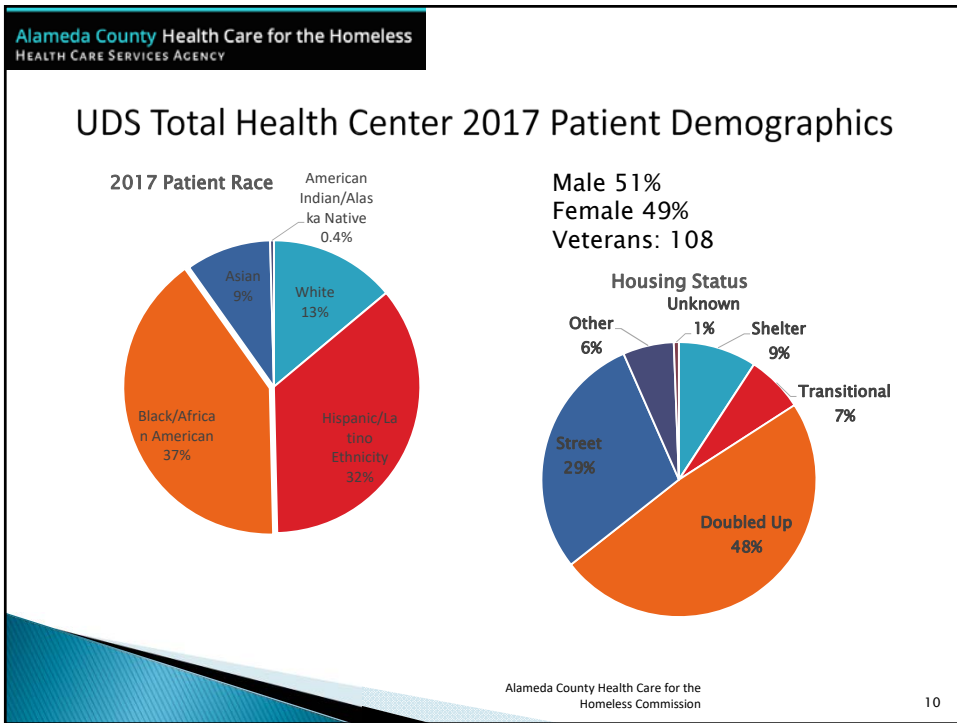
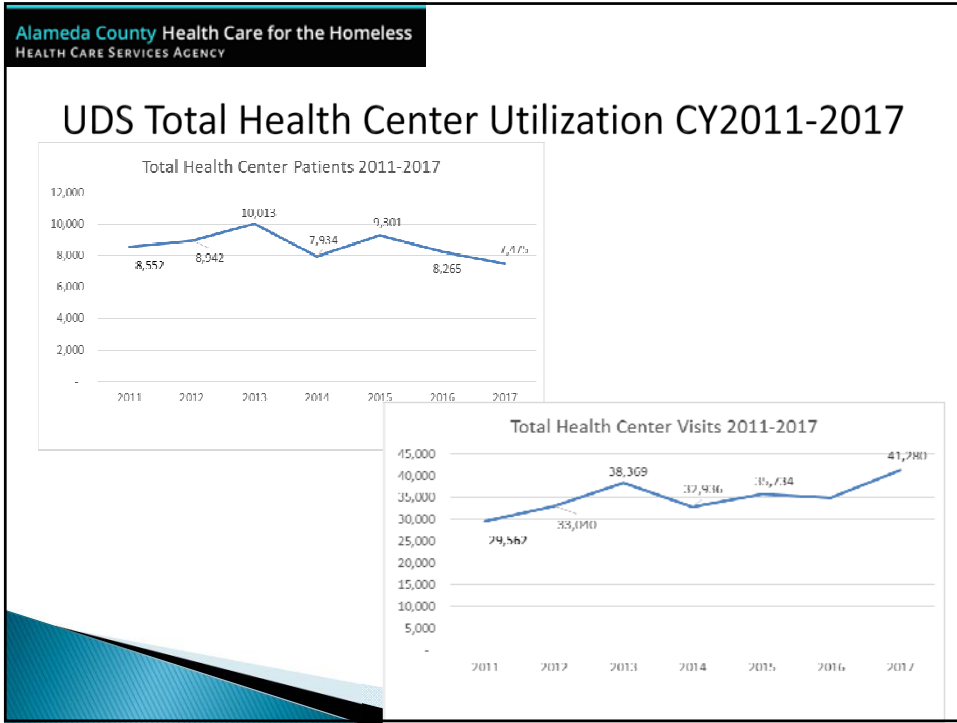
Behavioral Health Patients: 829 / 5,285 visits

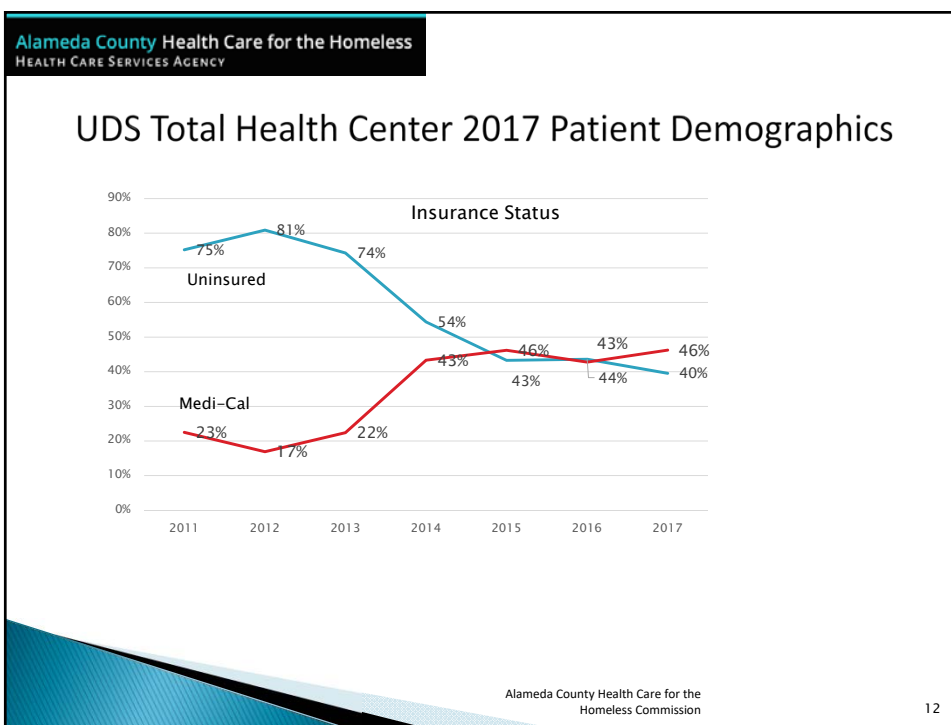
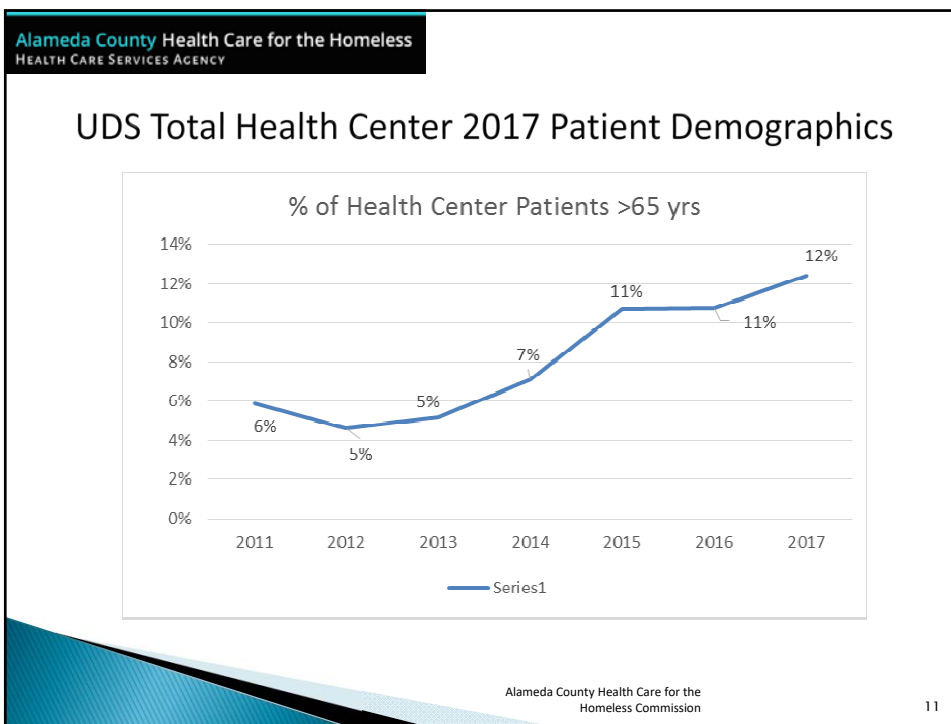
Dental Patients: 588 / 2,230 visits

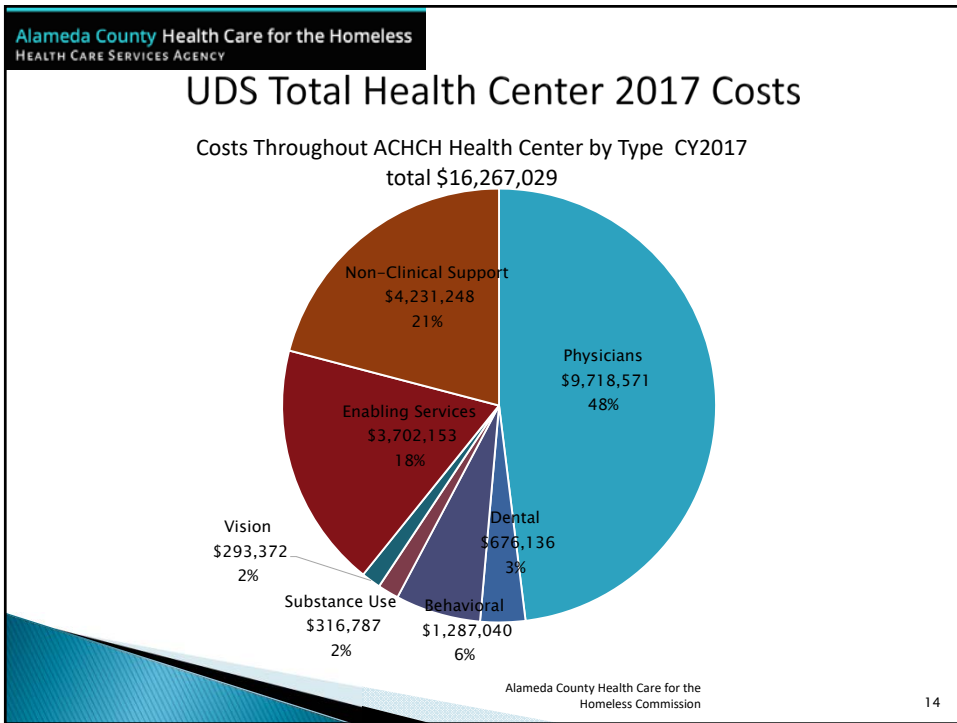
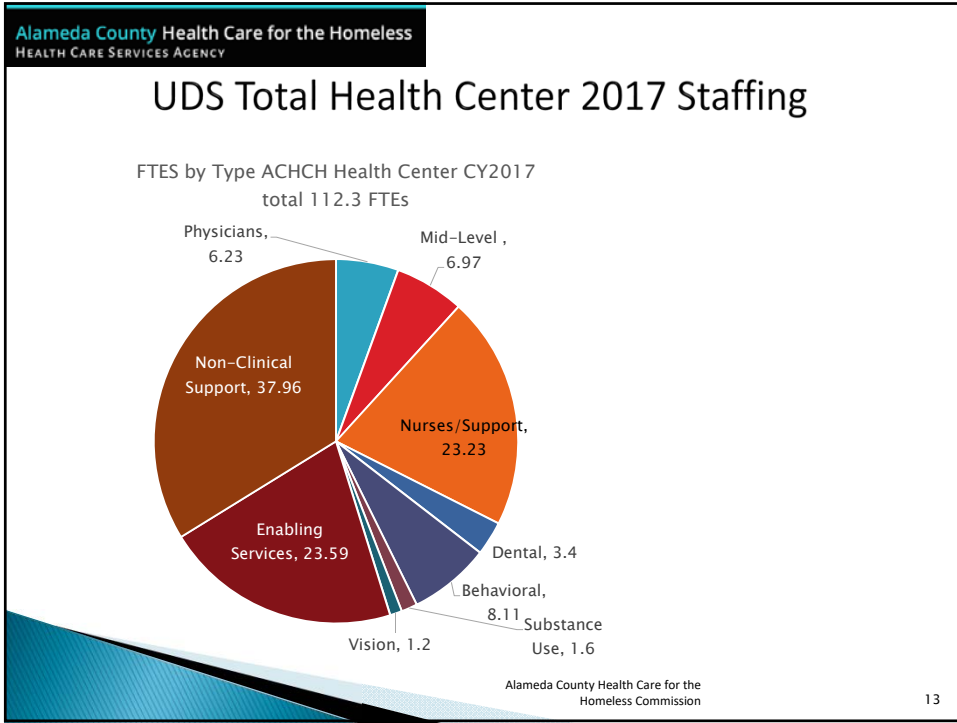
Optometry Patients: 749 / 1,168 visits

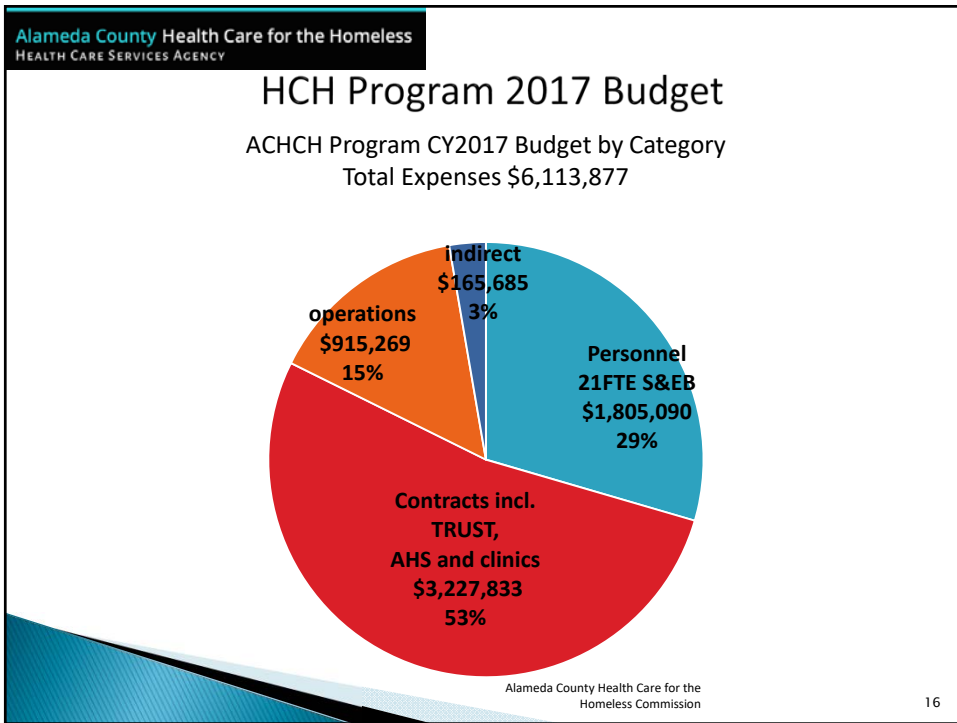
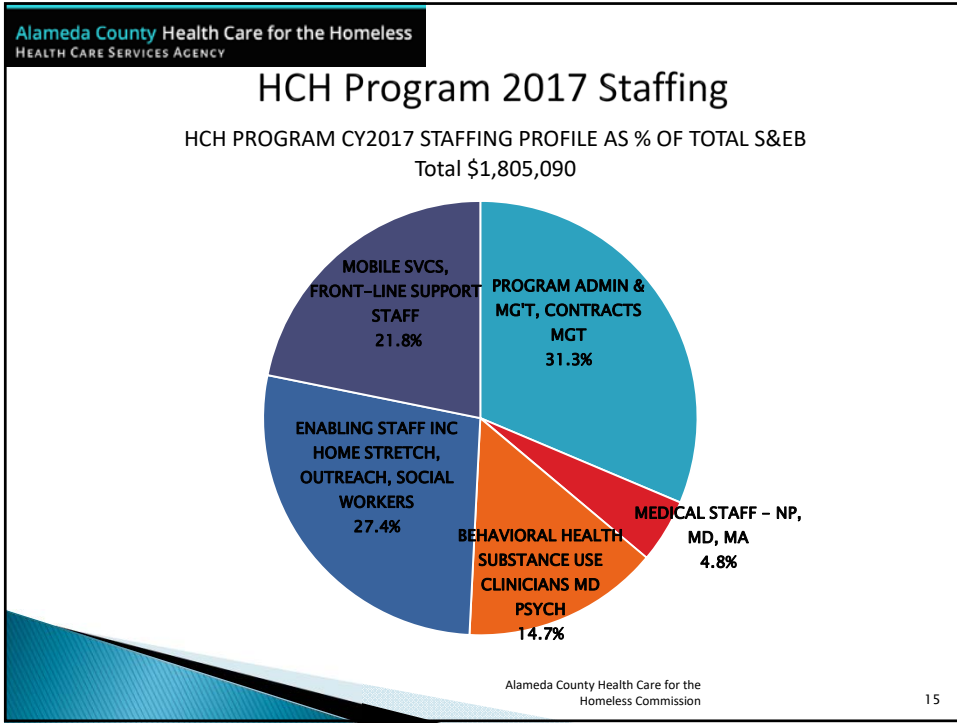
Enabling Services Patients: 1,544 / 5,394

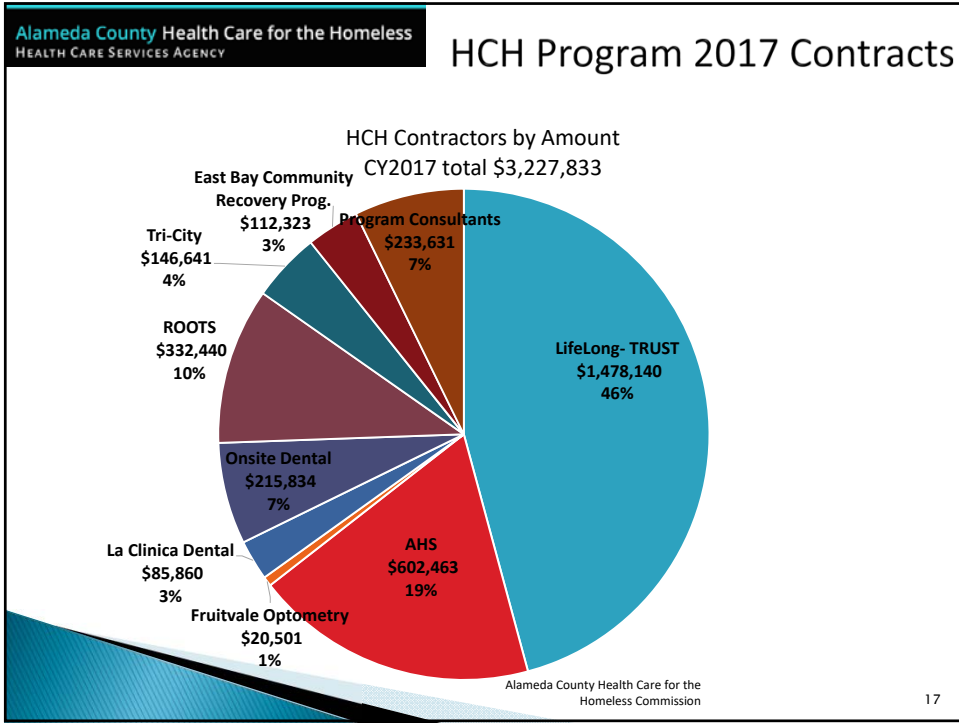
Alameda County Health Care for the Homeless Commission 8











Alameda County Health Care for the Homeless
HEALTH CARE SERVICES AGENCY

Questions?

Alameda County Health Care for the Homeless Commission

18